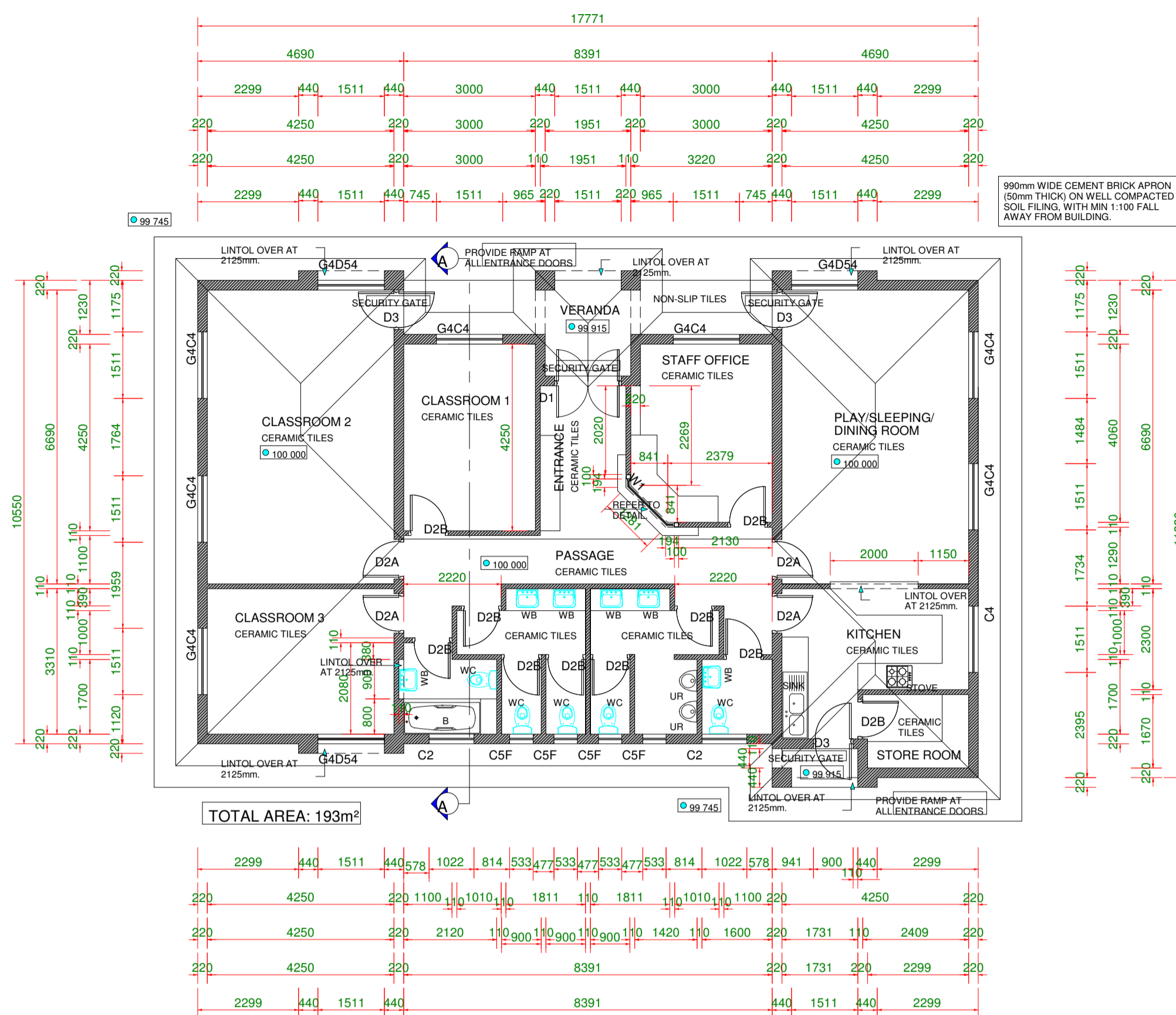
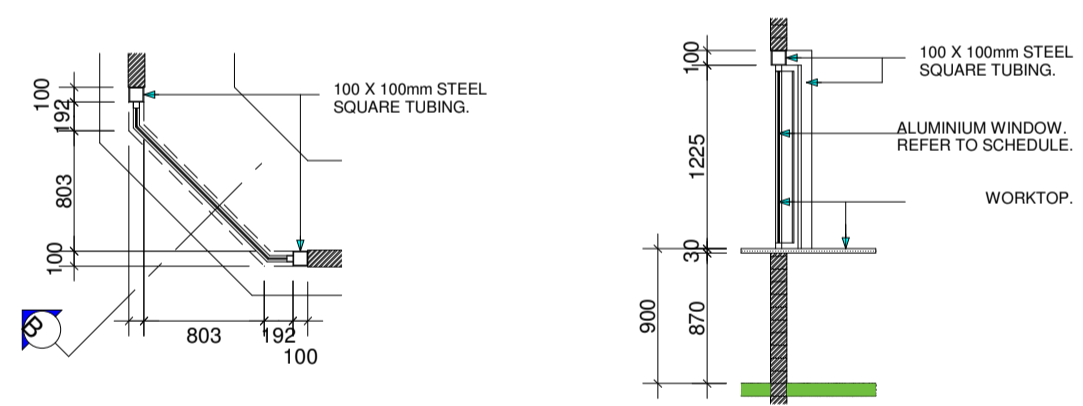


TOTAL AREA = 193m²



GROUND FLOOR PLAN
SCALE 1:100

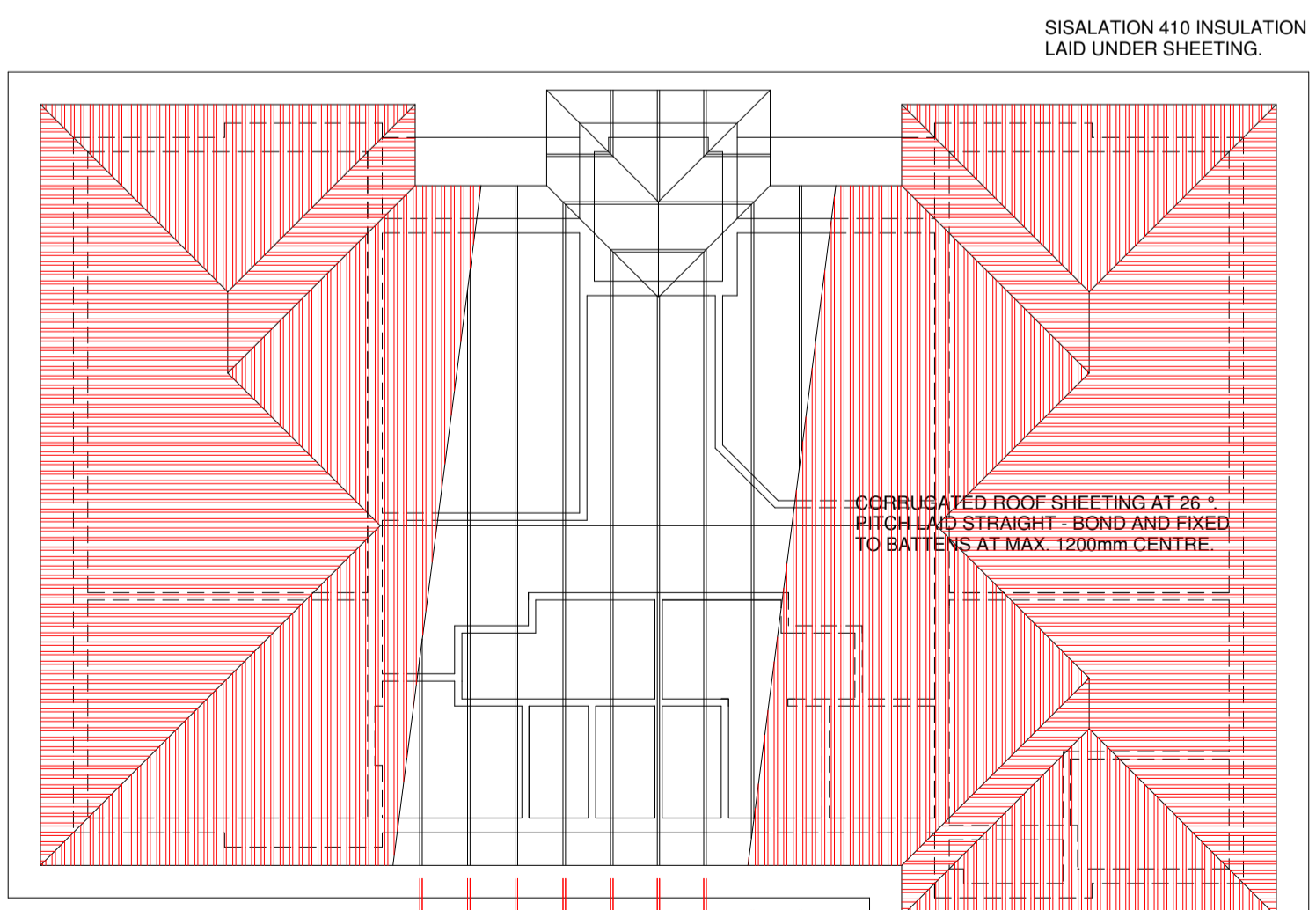
FOUNDATION PLAN
SCALE 1:100



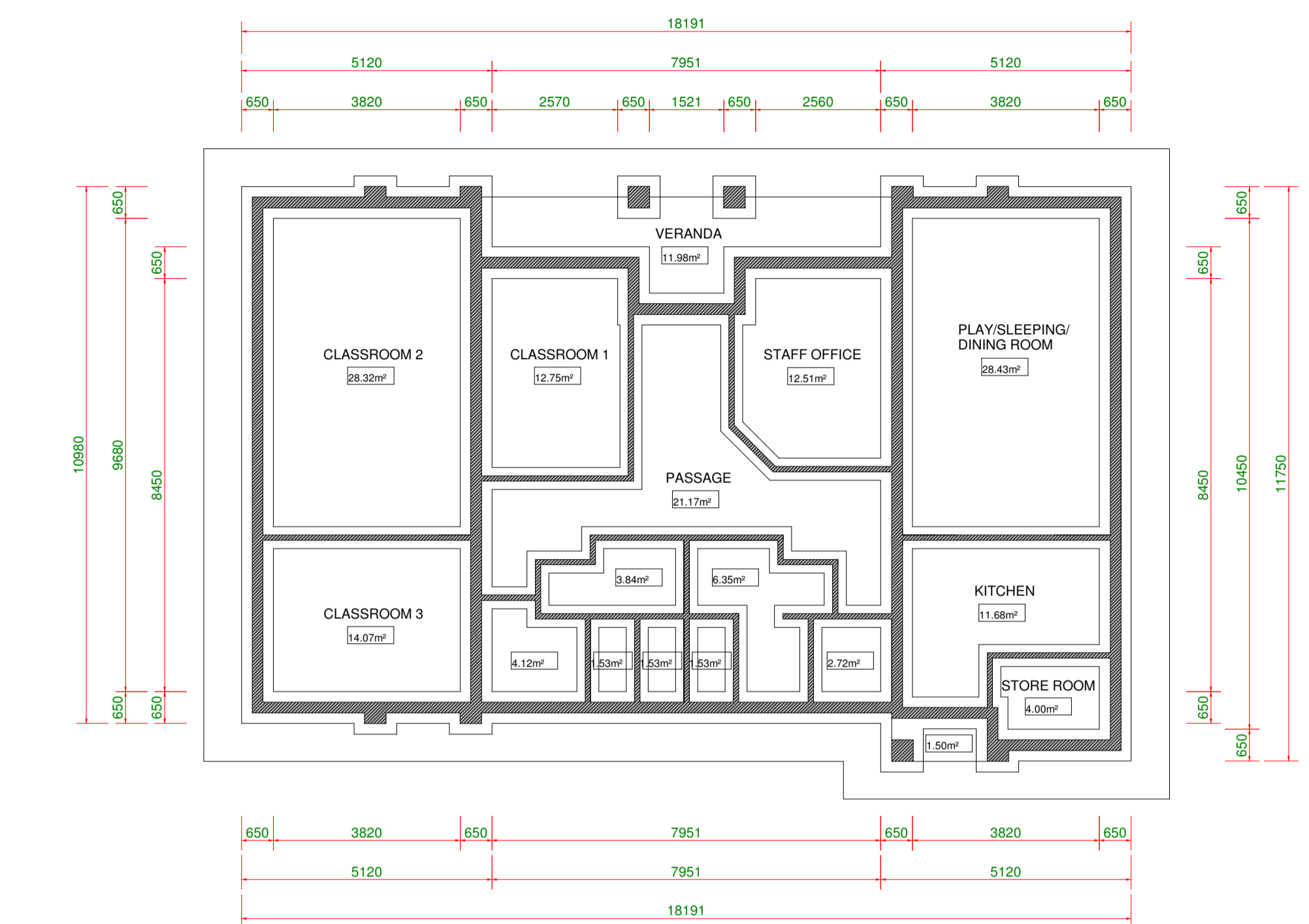
STAFF ROOM WINDOW - STEEL LINTEL DETAIL
SCALE 1:50

- SISALATION 410 INSULATION.
- CORRUGATED ROOF SHEETING AT 26° PITCH LAID STRAIGHT - BOND AND FIXED TO BATTENS AT MAX. 1200mm CENTRE.
- 114 X 38mm WALL PLATE.
- 225 X 10mm FIBRE CEMENT FASCIA BOARD.
- 114 X 38mm SAP RAFTER (SABS 0400).
- 76 X 50mm BATTEN FIXED AT MAX. 1200mm.
- 38 X 38mm BRANDERING.
- BRICK CORBELLING DETAIL
SCALE 1:25

TRUSS NOTE:
ALL INTERNAL WALLS TO BE BUILT UP TO A MINIMUM OF TWO BRICK COURSES ABOVE CEILING HEIGHT. NB: AT TRUSS TIE BEAMS, WALLS ARE TO BE KEPT CLEAR OF TRUSS SO THAT NO WALL OR WALL FINISH WILL TOUCH ANY TRUSS MEMBER. ALL TIMBER TRUSSES ARE TO BE MANUFACTURED BY AN APPROVED MECHANICAL TRUSS MANUFACTURER. ALL LAYOUTS AND DESIGNS TO BE APPROVED BY THE PROJECT STRUCTURAL ENGINEER BEFORE ORDERING.



ROOF LAYOUT PLAN
SCALE 1:100



ELECTRICAL AND DRAINAGE PLAN
SCALE 1:100

FIRE LEGEND		ELECTRICAL LEGEND	
	4.5kg MULTI-PURPOSE CHEMICAL DRY POWDER FIRE EXTINGUISHER		LIGHT SWITCH @ 1200mm HEIGHT
	EMERGENCY DIRECTIONAL EQUIPMENT SIGN		2-WAY LIGHT SWITCH @ 1200mm HEIGHT
	FIRE EXTINGUISHER SIGN		DISTRIBUTION BOARD
			STOVE POINT @ 1000mm HEIGHT
			DOUBLE POWER POINT @ 350mm HEIGHT
			DOUBLE POWER POINT @ 1000mm HEIGHT
			TELEPHONE POINT
			CEILING MOUNTED LIGHT FITTING
			WALL MOUNTED DAY-NIGHT LIGHT FITTING
			1200mm LONG SINGLE TUBE FLUORESCENT LIGHT FITTING
			150 LITER GEYSER

- DRAINAGE NOTES:
- ALL DRAINAGE TO BE DONE BY A REGISTERED PLUMBER AND IN ACCORDANCE WITH THE BUILDING REGULATIONS AND LOCAL AUTHORITIES.
 - ALL WASTE WATER PIPES TO BE 40mm Ø PVC.
 - ALL SOIL WATER PIPES TO BE 110mm Ø PVC.
 - ALL MAIN SEWER PIPES TO BE 110mm Ø PVC.
 - ALL CORNERS, BENDS AND CONNECTIONS MUST BE PROVIDED WITH INSPECTION EYES.
 - CLEANING EYES MUST BE PROVIDED AT THE START OF EACH PIPE AND AT EACH 25m MAXIMUM INTERVALS AND ALL FALL PIPES.
 - TWO WAY VENTILATES ON THE OUTSIDE ON ALL SOIL WATER PIPES.
 - ANTI-VAC TRAPS ON ALL WASTE WATER FURNITURE FURTHER AWAY THAN 3m FROM GULLY.
 - ALL CLEANING EYES CLOSED WITH 265 X 265mm CAST-IRON COVER COMPLETE WITH FRAME AND CONCRETE HOUSING BY APPROVED MANUFACTURER AND IT MUST BE MARKED.
 - PVC GULLY WITH STANDARD CONCRETE HOUSING AND PVC GRID. GRID AS SUPPLIED BY MARLEY O.O.A.
 - SUPPLY ALL FURNITURE WITH TRAP FOR 40mm AND 110mm PVC PIPES TO SATISFY STANDARDS OF LOCAL AUTHORITIES.
 - ALL ACCESS EYES AND INSPECTION EYES MUST BE ACCESSIBLE.
 - ANTI-VACUUM TRAPS ON ALL W.C'S.

COPYRIGHT © 2019 BY DIKGABO CONSULTING ENGINEERS. THE DESIGN AND DRAWINGS ARE THE PROPERTY OF DIKGABO CONSULTING ENGINEERS. NO PART OF THIS DRAWING OR ANY INFORMATION CONTAINED HEREIN IS TO BE REPRODUCED OR TRANSMITTED IN ANY FORM OR BY ANY MEANS, ELECTRONIC OR MECHANICAL, WITHOUT THE WRITTEN PERMISSION OF DIKGABO CONSULTING ENGINEERS. THE CLIENT ACCEPTS THE DESIGN AND DRAWINGS AS SHOWN AND RELEASES DIKGABO CONSULTING ENGINEERS FROM ALL LIABILITY FOR ANY DAMAGE OR INJURY TO PERSONS OR PROPERTY ARISING FROM THE USE OF THE DRAWINGS FOR ANY PURPOSE OTHER THAN THAT AUTHORIZED BY THE CLIENT. THE CLIENT ACCEPTS THE DESIGN AND DRAWINGS AS SHOWN AND RELEASES DIKGABO CONSULTING ENGINEERS FROM ALL LIABILITY FOR ANY DAMAGE OR INJURY TO PERSONS OR PROPERTY ARISING FROM THE USE OF THE DRAWINGS FOR ANY PURPOSE OTHER THAN THAT AUTHORIZED BY THE CLIENT.

REVISION		
NO.	DATE	DESCRIPTION

NOTES

BLOUBERG MUNICIPALITY
 PO Box 1593, Senwabarwana
 Tel: 015 505 7100
 Fax: 015 505 0568 / 0296
 Email: MotsokoM@blouberg.gov.za
 CLIENT

DIKGABO CONSULTING ENGINEERS
 PO Box 1365, Gallo Manor, 2052
 Tel: 011 656 4075
 Fax: 086 550 7497
 Email: floyd@dikgabo.co.za
 ENGINEER

DESIGN	P J BOTHA
REG. NO.	5508
SIGNATURE	
DATE	
DRAWN BY	J KIRKLAND
ENGINEER	F M RAKAU
REG. NO.	20070023
SIGNATURE	
DATE	
CLIENT	
SIGNATURE	
DATE	

PROJECT
TOWERFONTEIN CRÉCHE

DRAWING TITLE
WORKING DRAWINGS

DATE	OCTOBER 2019
SCALE	AS SHOWN
PROJECT NO.	BM07/18/19
DRG. NO.	BM07/18/19 - 002
PRINT ISSUED	-
File Path	